



Installing Boundary Encryption 2010 Plug-In

Step-by-step guide for install & first usage

Version: 0.7

Date: 02/09/2011

Table of Contents

1. Dependencies	Page 03
a. .Net 3.5 SP1 Framework	Pages 03-04
b. Microsoft Visual Studio 2010	Page 05
c. Microsoft Office 2007 Primary Interop Assemblies	Page 05
2. Installing Boundary Encryption Plug-In 2010	Pages 06-10
3. Trouble Shooting	Page 10
a. Reboot Machine	Page 10
b. Disabled	Page 10
c. Trust Center	Page 11
d. Re-Install	Page 11

Dependencies

Before installing SSLPost Boundary Encryption on each of your individual machines, you will need to make sure that the below dependencies are installed on your computer. The three dependencies are:

- [.Net 3.5 Service Pack 1 Framework](#)
- [Microsoft Visual Studio \(vstor40_x86.exe\)](#)
- [2007 Microsoft Office Update: Redistributable Primary Interop Assemblies](#)

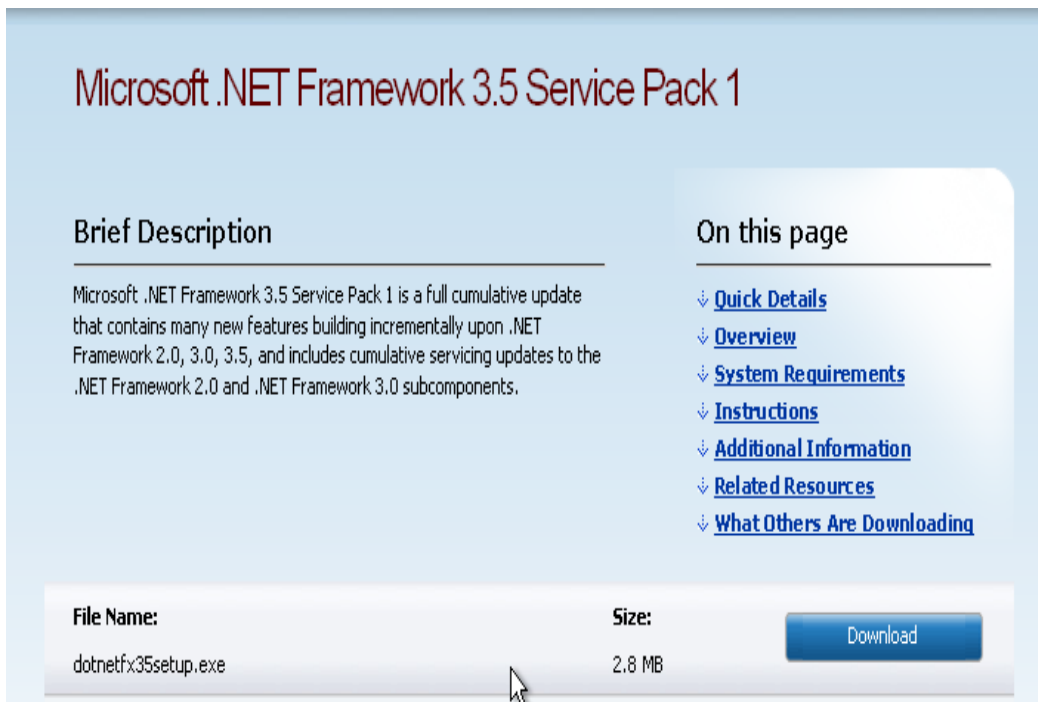
Before installing the above, it may be worth checking your computer to see if you have these already. You can do this by going to your **Start Menu, Control Panel, Add or Remove Programs** and scrolling down your list to see if they are in there.

a.) .Net 3.5 SP1 Framework

If .Net Framework is not installed you can install it manually. You must ensure that you have the latest version of .Net 3.5 SP1 framework.

To install this dependency, please navigate to the following URL:

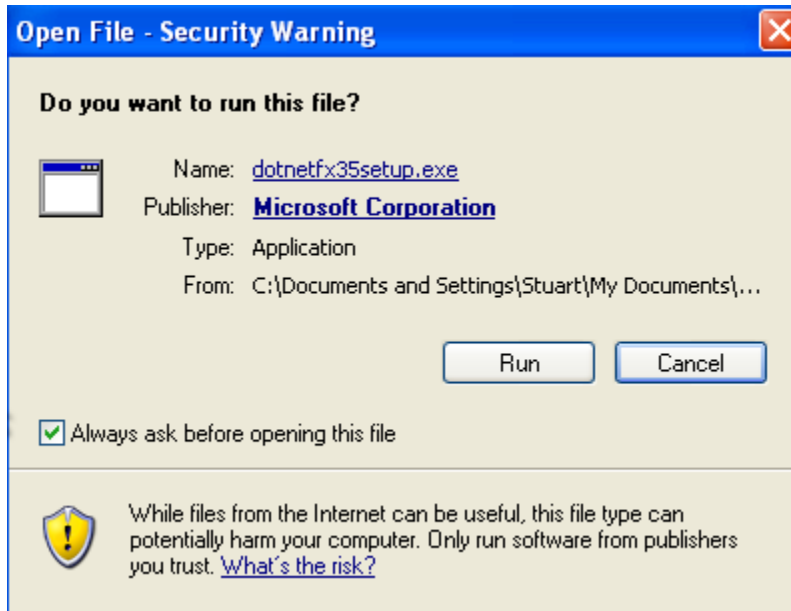
<http://www.microsoft.com/downloads/en/details.aspx?FamilyID=ab99342f-5d1a-413d-8319-81da479ab0d7>



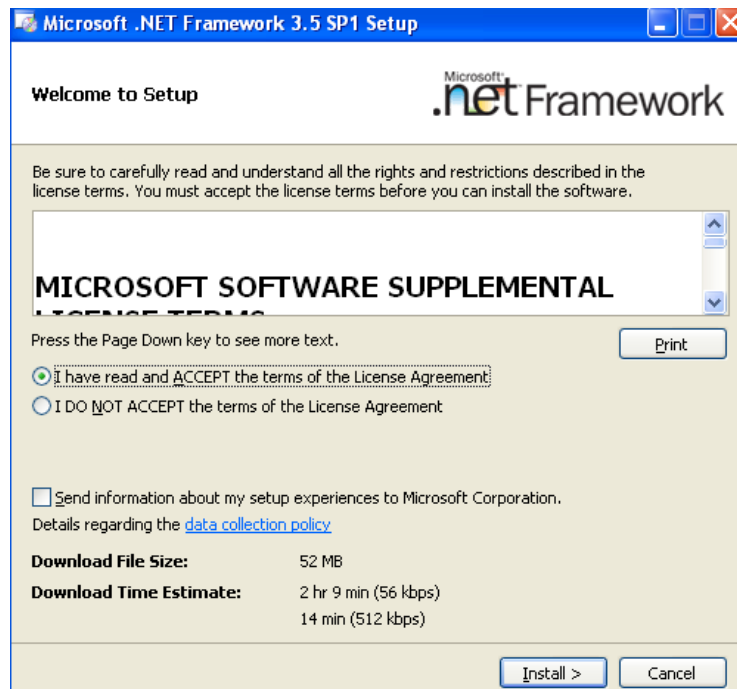
File Name:	Size:	Download
dotnetfx35setup.exe	2.8 MB	Download

Click the "**Download**" button

Now, locate the file in your downloads directory and double click to install .Net Framework, once the above dialogue box opens click **Run**:



Read and Accept the license terms and click **Install**, let the installation proceed by downloading the files required from the Internet and installing them as required. Once completed successfully proceed to the next step.



b.) Microsoft Visual Studio 2010

If Microsoft Visual Studio 2010 Tools for Office Runtime is not installed on your machine, please visit the Microsoft website and install manually:

<http://www.microsoft.com/download/en/search.aspx?q=Microsoft%20Visual%20Studio%202010%20Tools%20for%20Office%20Runtime>

Please note, you will need to click on the (vstor40_x86.exe) version.

c.) Microsoft Office 2007 Primary Interop Assemblies

Finally if Microsoft 2007 Primary Interop Assemblies is not installed on your machine, please visit the Microsoft website and install manually:

<http://www.microsoft.com/download/en/search.aspx?q=Microsoft%20Office%202007%20Primary%20Interop%20Assemblies>

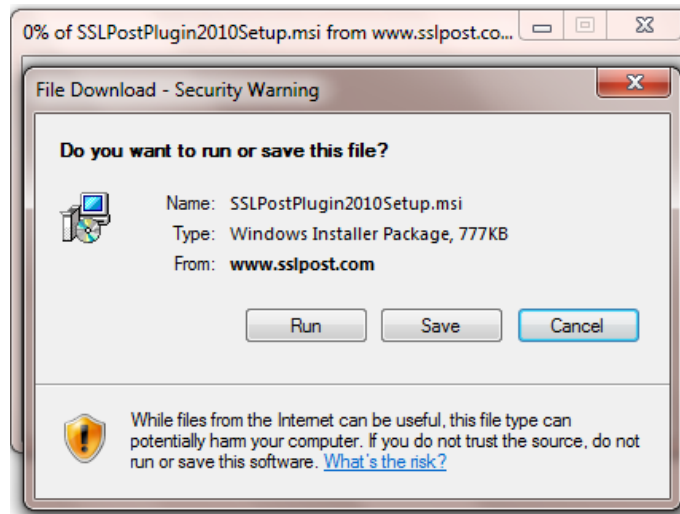
Installing Boundary Encryption 2010 Plug-in

The URL for the Boundary Encryption 2010 Plug-In is:

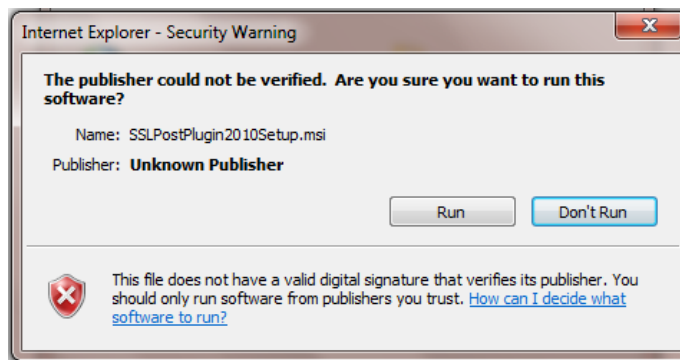
<http://www.sslpost.com/downloads/BE/plugins/2010/SSLPostPlugin2010Setup.msi>

Before installing this, make sure you have closed Microsoft Outlook down completely!

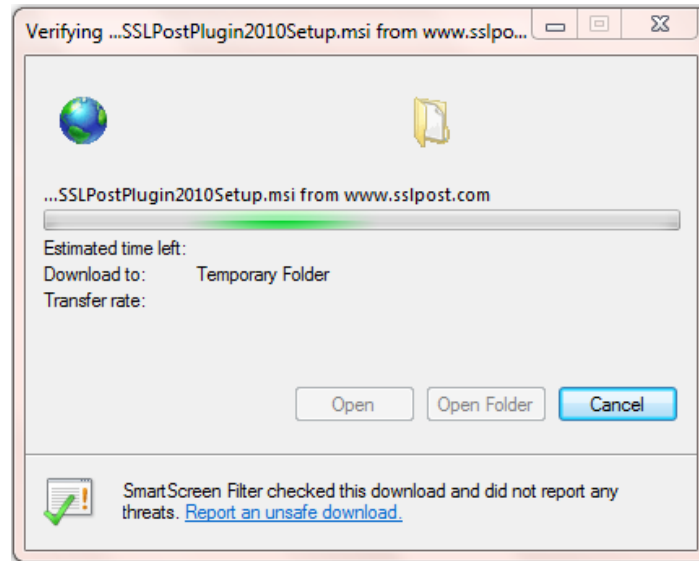
Now copy and paste the above URL into your browser and a pop up will appear, please click on the “Run” button:



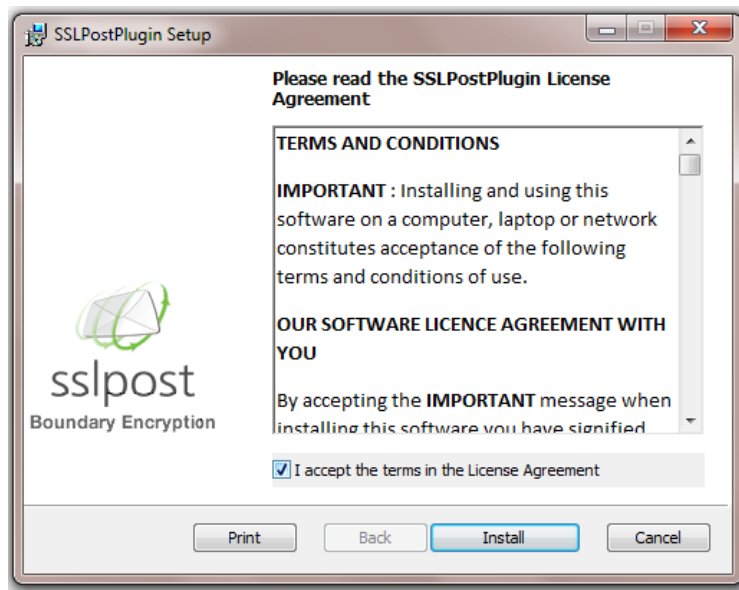
The below security message may appear, please click on the “Run” button:



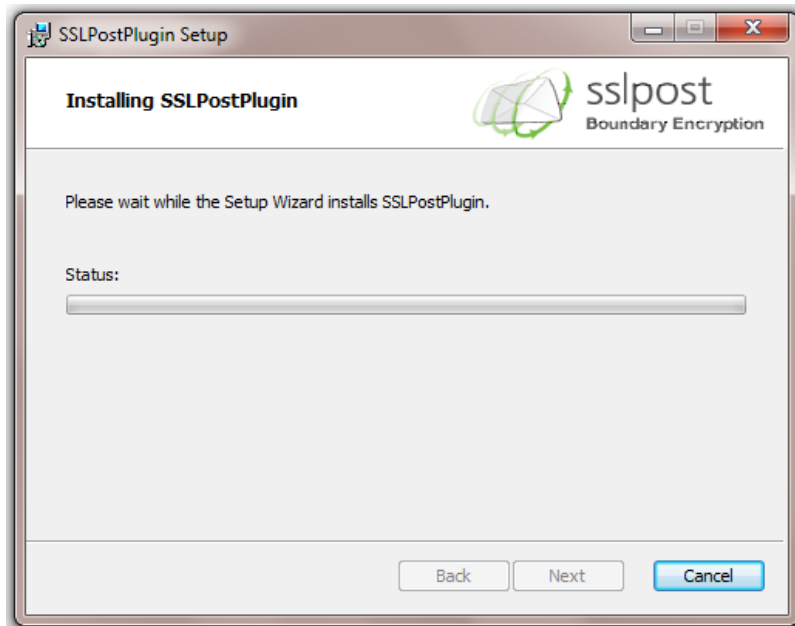
This will then extract the files:



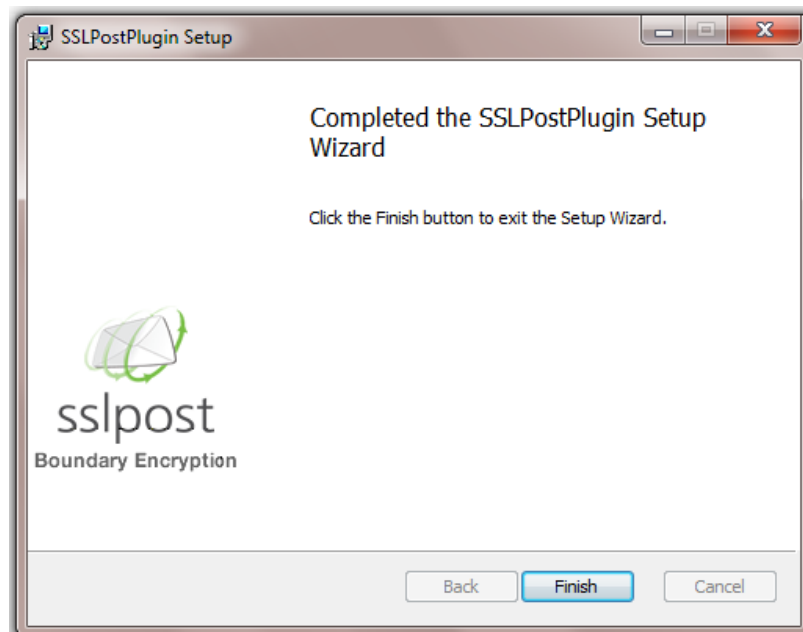
Once extracted, you will be presented with the below Terms and Conditions, please read these, tick the “I accept the terms in the License Agreement” box and then click “Install”:



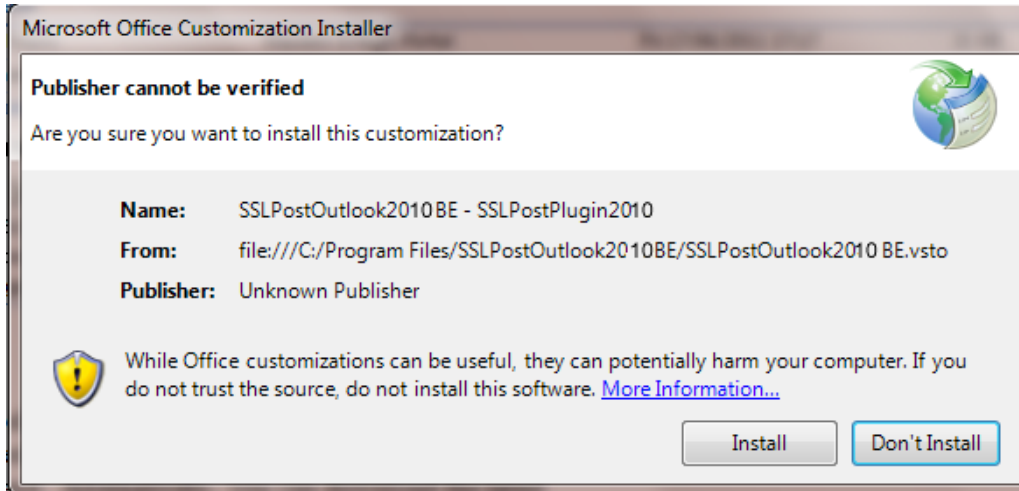
Now the installation process will begin, this may take a few minutes to complete:



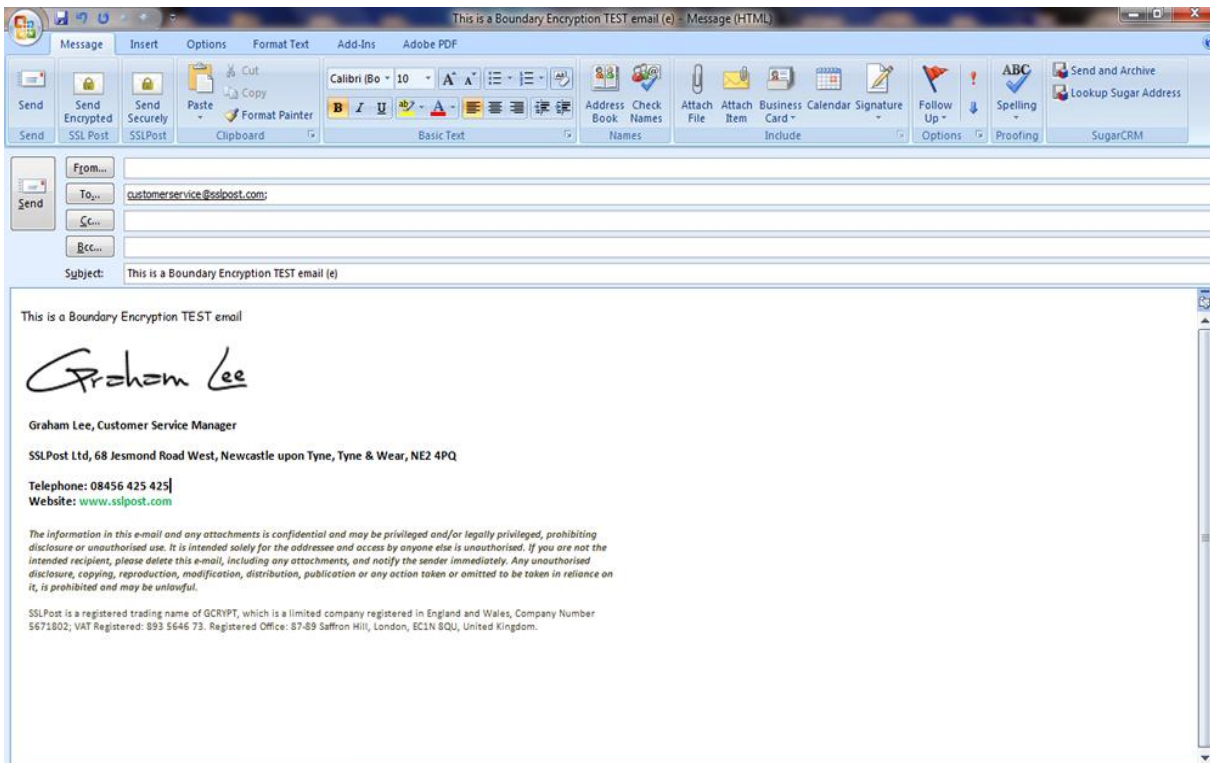
Once this has installed, you will be displayed with the below box, please click "Finish":



Now open up Microsoft Outlook. You may get a pop up below, so just click “Install”:



Now bring up a New Email you wish to send, you will now see a new “Send Encrypted SSLPost” button at the top left of the screen, please create your email, add attachments if required and make sure you put a Subject Title within this email too, when ready to send via Boundary Encryption, you can click your new “Send Encrypted” Button:



A small box will pop up, asking you to confirm by pressing "Send":



You can check your email has been sent, as it will show in your Outlook Sent folder.

If you have any problems with the above installation, please contact our SSLPost Customer Services team between the hours of 9am – 5pm Monday to Friday on 08456 425 425 or email customerservice@sslpost.com

Trouble Shooting

If the SSLPost Boundary Encryption Outlook Plug-in has previously worked, follow the procedures below:

a.) Reboot Machine

Reboot the machine and restart Microsoft Outlook, a Windows update could have caused a temporary issue within Outlook.

b.) Disabled

It is possible that Outlook has disabled the SSLPost Boundary Encryption Plug-in

1. Go to **Help**
2. **Disabled Items**
3. Select **SSLPostBEPlugin 2010** in the disabled item list
4. Click **Enable**
5. Press **Close**
6. **Restart Outlook**, and verify correct operation

c.) Trust Center

The SSLPost Boundary Encryption Plug-in maybe inactive,

1. Click **Tools**, then **Trust Center**
2. Select **Add-ins**, and ensure SSLPostBEPlugin 2010 is in “Active Applications”
3. **Restart Outlook**, and verify correct operation

d.) Re-Install

If the above steps have failed, try re-installing the SSLPost Boundary Encryption Plug-In Completely.

1. Go to from **Start Menu, Control Panel, Add or Remove Program**
2. Select SSLPost WebSender 2010 and click **Remove**, follow instructions

Reboot your computer, and follow Installation instructions again.